



# Utility Conductor / Wire Identification Guide

**Published by:**

**The Institute for Safety in Powerline Construction**

**5501 – A John Eskew Blvd.**

**Alexandria, LA 71303**

# Utility Conductor / Wire Identification Guide

## Table of Contents: (Content Courtesy of WE Energies)

- **Aluminum Wire**
- **Copper Wire**
- **Miscellaneous**

## Glossary:

- **Acronyms**
  - **ACSR.** Aluminum Conductor Steel Reinforced
  - **AWG.** American Wire Gauge (Standard measurement used to determine diameter)
  - **CN/JKT.** Copper w/nylon jacket insulation
  - **HD.** Wire was 'hard drawn' during processing
  - **SD.** Wire was 'soft drawn' during processing
  - **XLPE.** Cross linked polyethylene insulated
- **Other Terms**
  - **Aluminum Phase.** High strength alloy
  - **Bare.** Wire does not have an insulating cover
  - **Coated.** Wire has an insulating cover
  - **Electrical Current Capacity.** Designed by volts, i.e. 600v
  - **Multiple cable assemblies.** Designated by number and type of cable, i.e. 2-#10, we/#2/0 neutral
  - **Resistance.** Designated by KCM value (350, 336.4, 750, etc.)
  - **Strands.** The number of individual wires used in the cable
  - **Width of multi-strand conductor.** Designated smallest to largest: #1/0, #2/0, #3/0 and #4/0

## #6 AWG 7 Strand Aluminum Coated





**#2 6/1 Strand ACSR Bare Aluminum**

**300V 2 4/0 XLPE Aluminum / 1 246.9 Aluminum Bare**



**600V DB 2-350 Aluminum Phase w/#3/0 Neutral**

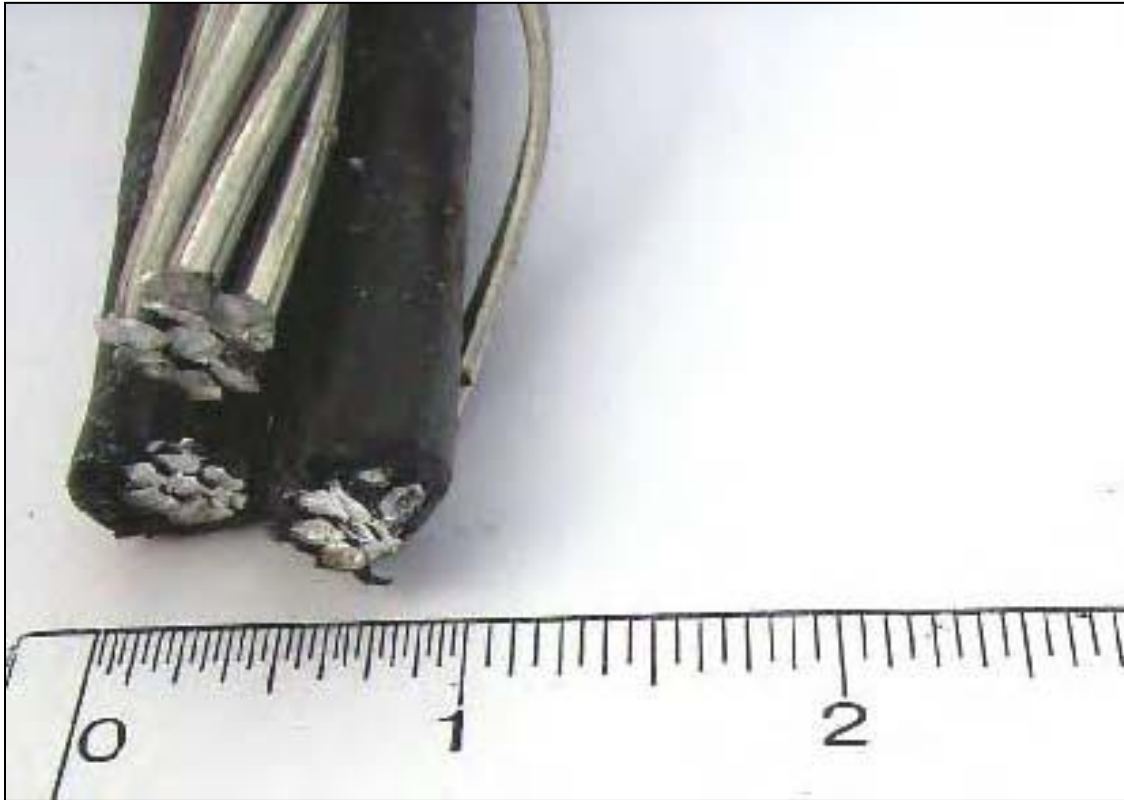






**600V DB3-#3/0 Aluminum Phase w/ 1/0 neutral**

**300V 2-1/0 XLPE Aluminum and 1-123.3 Aluminum Bare**



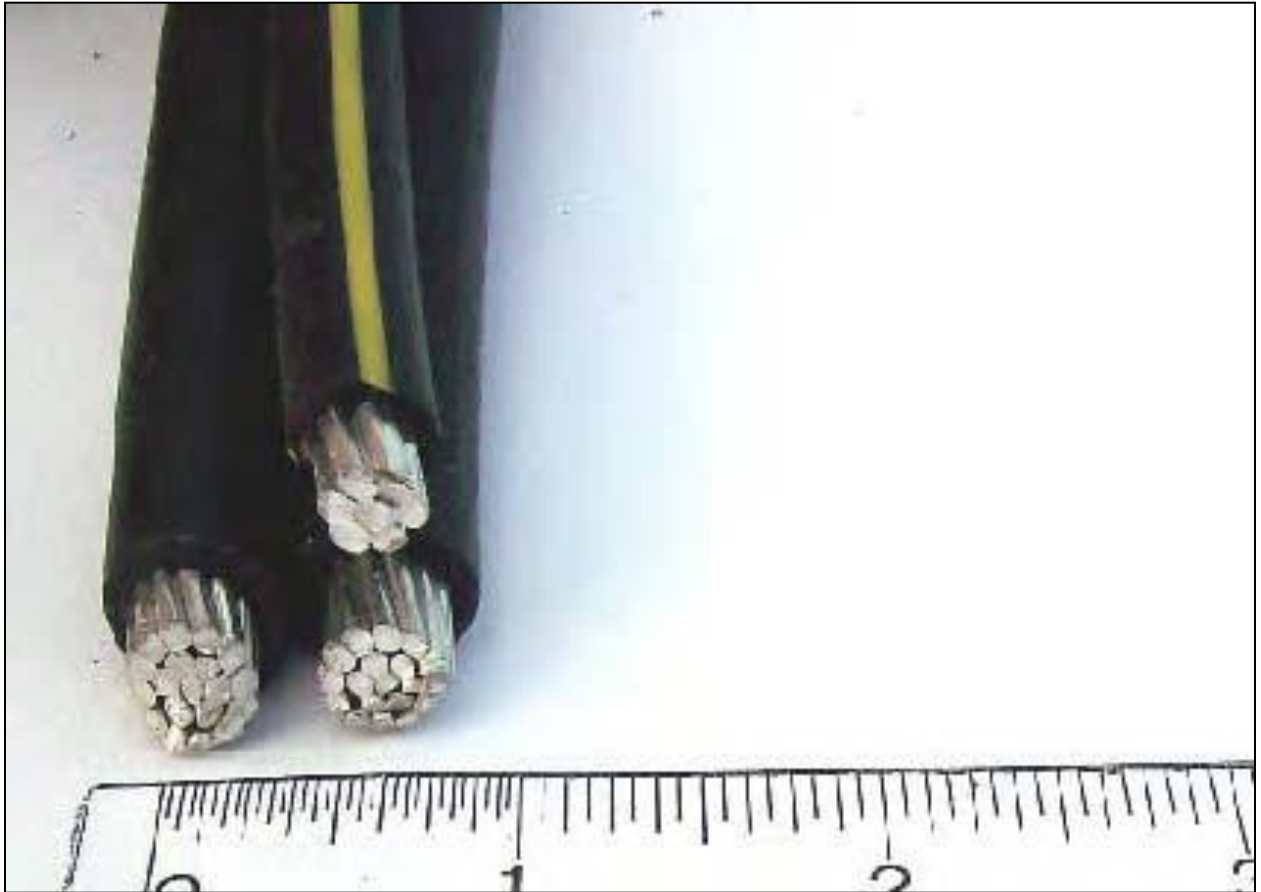


## 600V DB 3-750 Aluminum Phase w/350 Neutral





**336.4 KCM 26/7 Strand ACSR Bare Aluminum**



**600V DB 2 - #1/0 19 Strand Aluminum Phase CD**



**#3/0 6/1 Strand ACSR Bare Aluminum**



**600V DB 2-#3/0 Aluminum Phase W/ 1/0 Neutral**

**300V, 2 - #1/0 Strand Aluminum, Insulated with Bare Neutral**





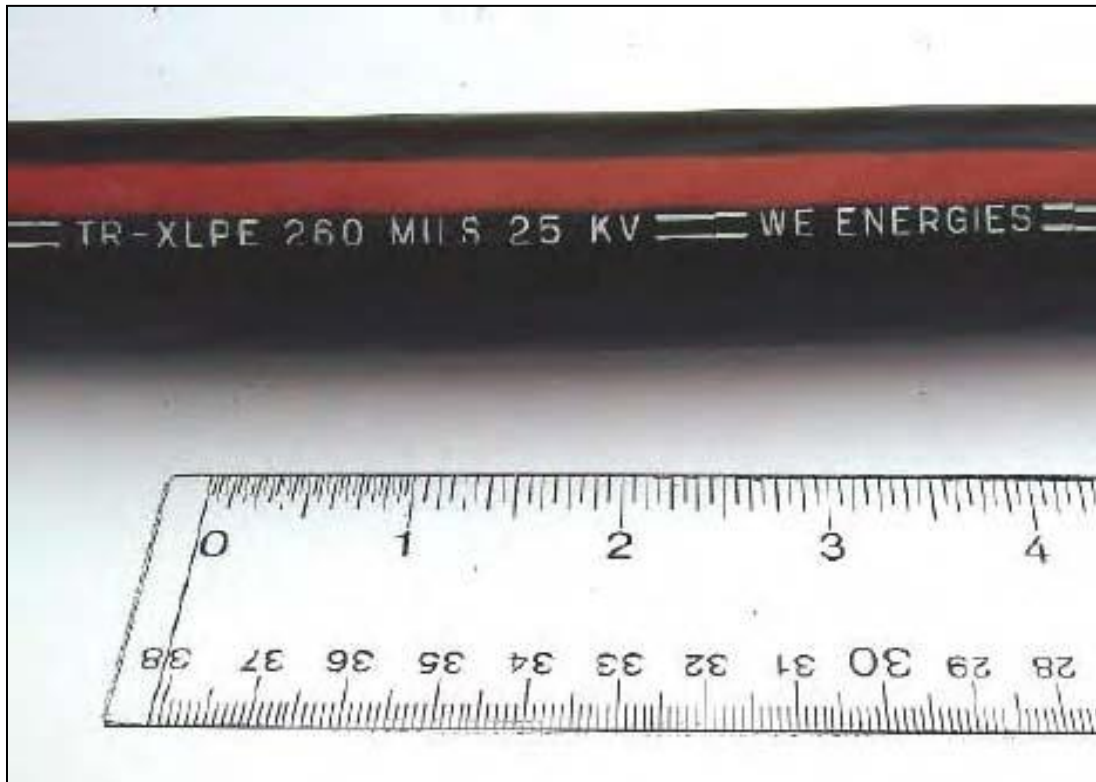


**600V DB (3) 750 KCM-61 Strand Aluminum Phase**

**CN/JKT 15KV #2 Solid Aluminum Core**



**CN / JKT 25KV #2 Solid Aluminum Core**





**#4 7 Strand Copper 600V X-Linked Poly**



**#1/0 19 Strand Copper 600 V XLPE**



**#6 SD Solid Copper WE Poly - Pole Grounds**

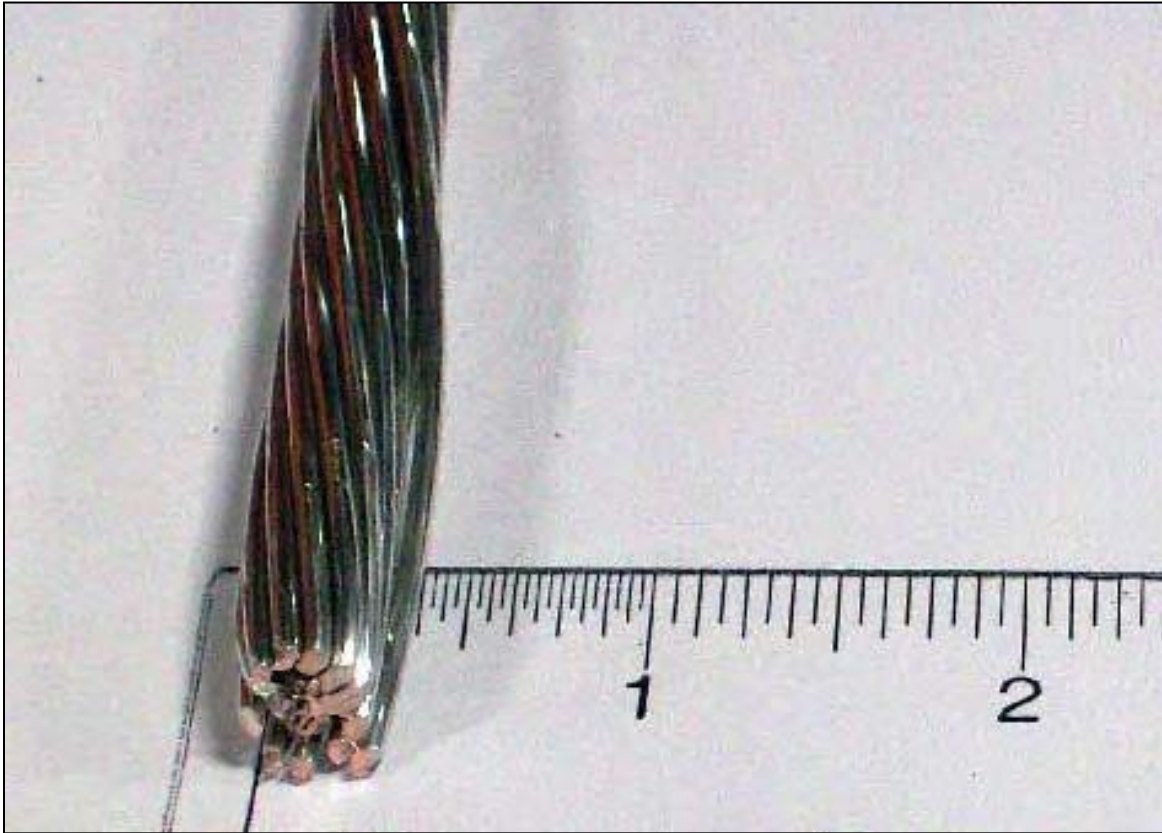




**#4/0 19 Strand Copper 600V XLPE**



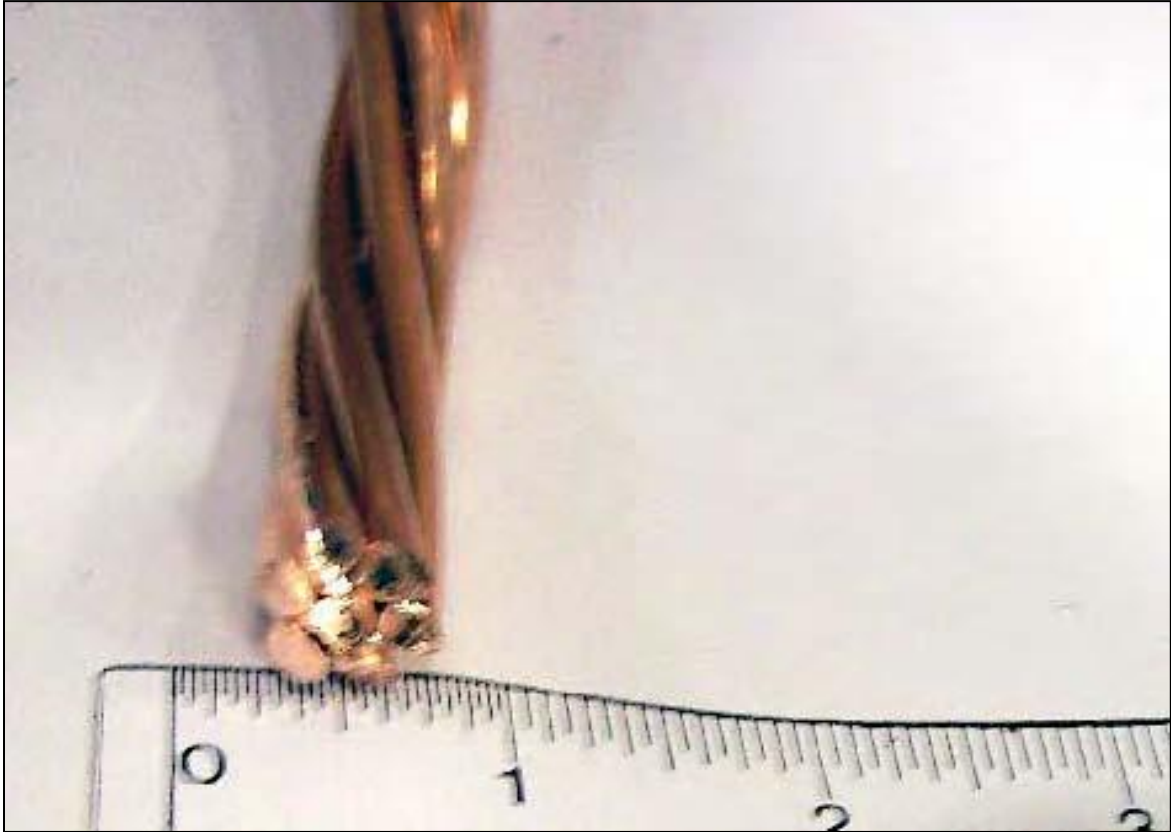
**#1/0 7 Strand 3D Copper Non-Coated BW**



**#1/0 19 Strand Tinned Copper Coated Bonding**



**#6 HD Solid Copper WR Poly - Pole Ground**

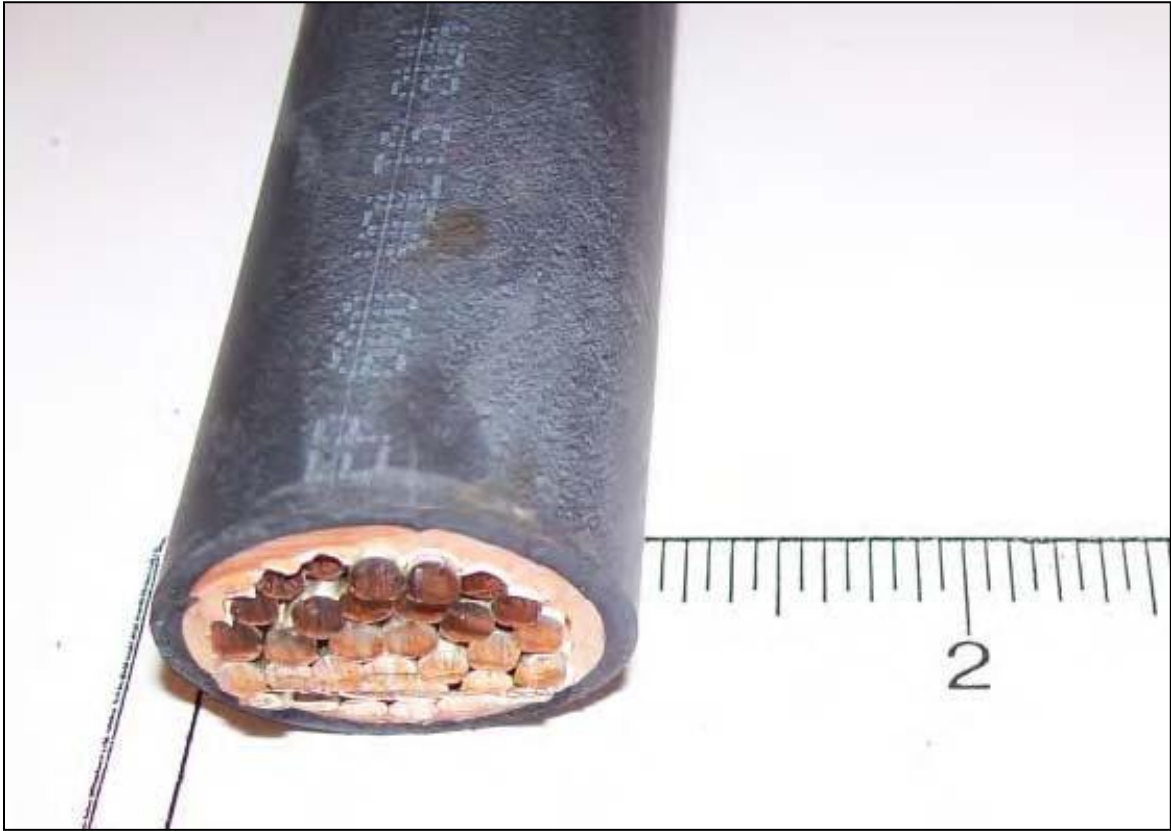


**#4/0 7 Strand SD Copper Non-Coated BW**



**15 KV #2 Stranded Copper**





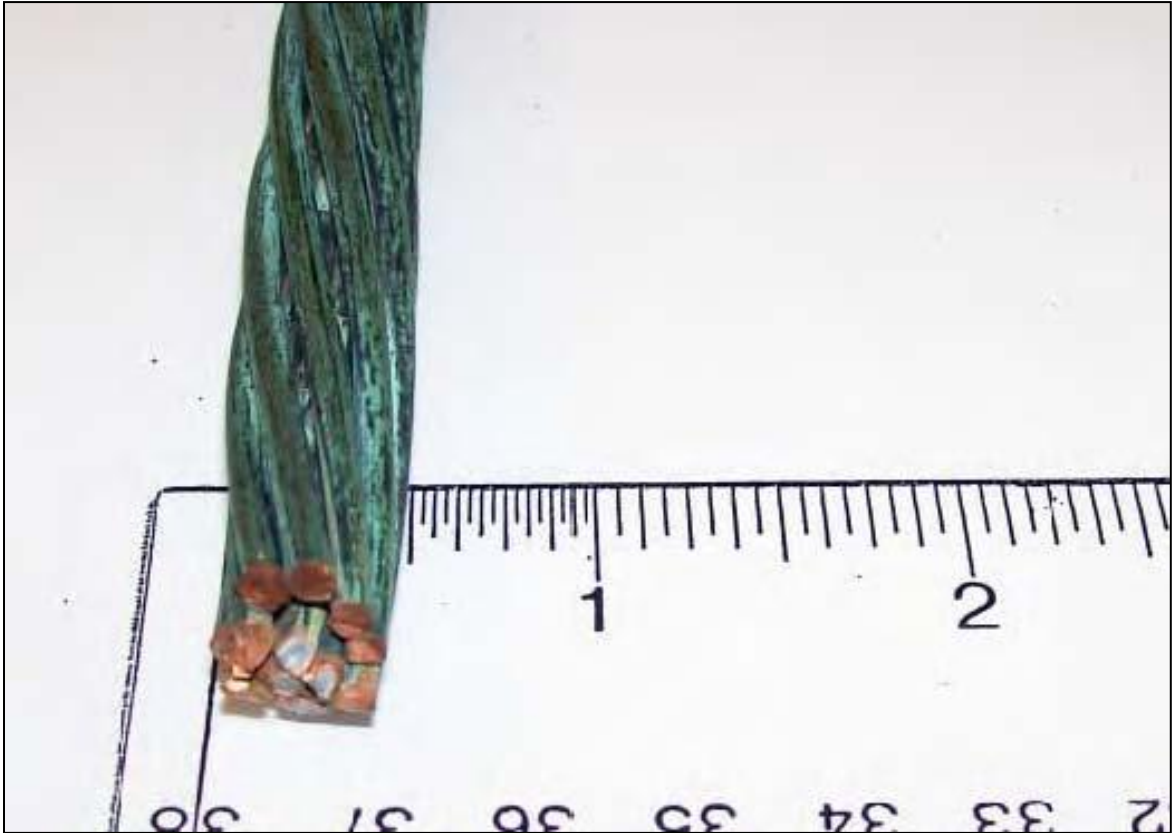
**600 V 500 KCMIL 37 Strand**



**14 KV Paper Insulated - Lead Covered**



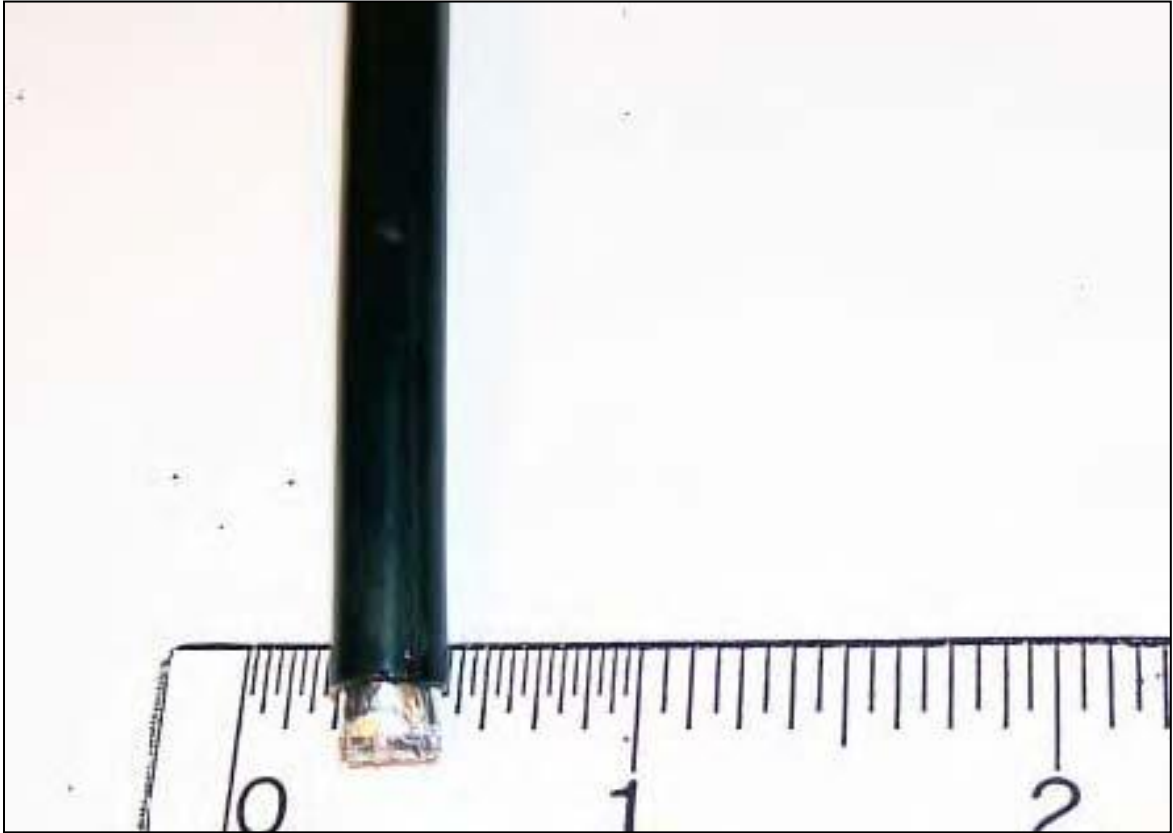
**#4/0 Stranded Copper**



**#1/0 7 Strand Copper - Steel Core**

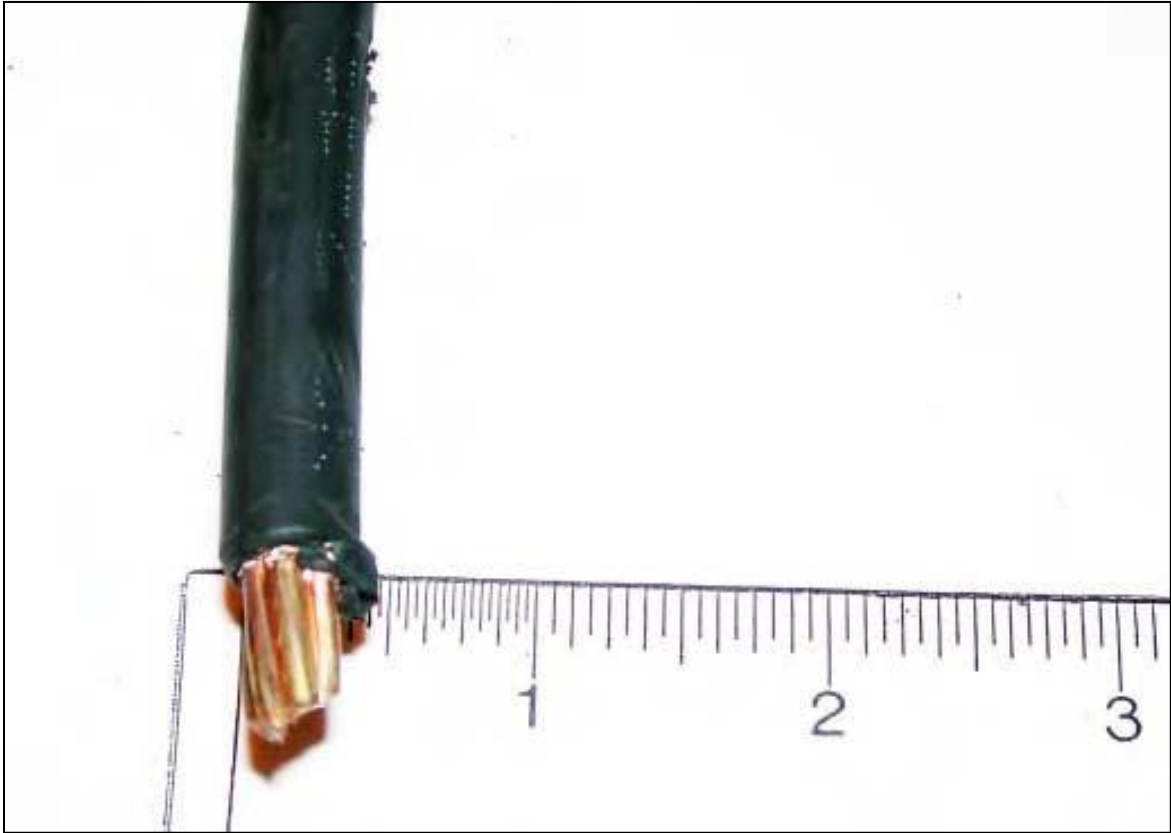


**Telephone 6 Pair**



**Cable TV (Coax)**

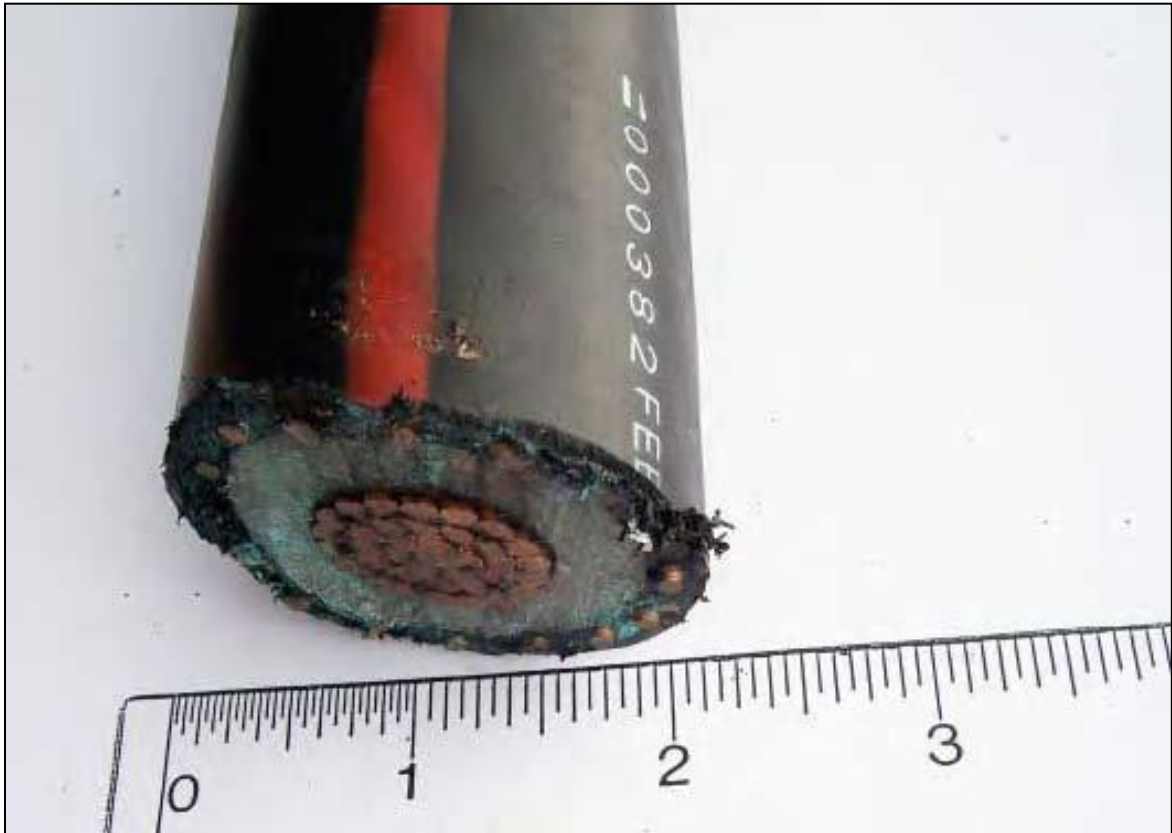




**#2 7-Strand, CU 600 V XLPE**



**350 KCM 37 Strand CU 600 V XLPE**



**500 KCMIL 28 KV Copper**



**#4/0 Bare Copper Ground**



**Copper Ground Rod - Steel Core**



**7 Strand Steel Guy Wire**